



Den ljusnande framtid är vår?

**Tobias Nordström, partner på Spacescape och
stadsbyggnadsforskare på NTNU**

Byggherredagen 12 april 2024

Fem megatrender som formar framtidens stad

- 1. Fortsatt förtätning**
- 2. Digitalisering**
- 3. Miljöförändringar**
- 4. Livskvalitet**
- 5. Hållbarhetsmål**

Fyra koncept för framtidens attraktiva hållbara stad

Den gångvänliga staden







Kommunens behov



Marknadstryck



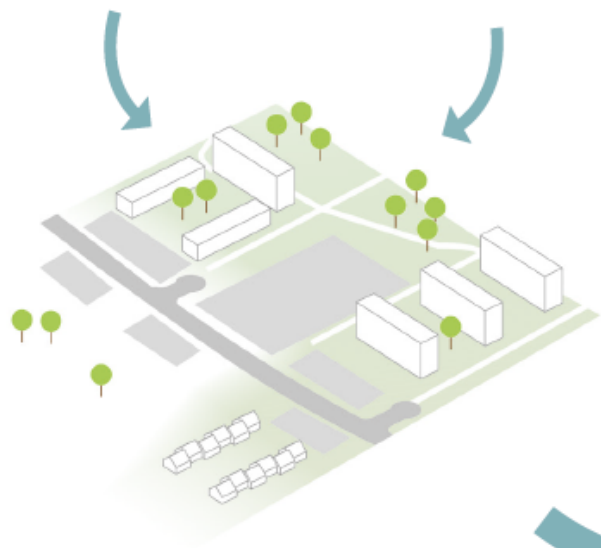
Frihet



Utrymme

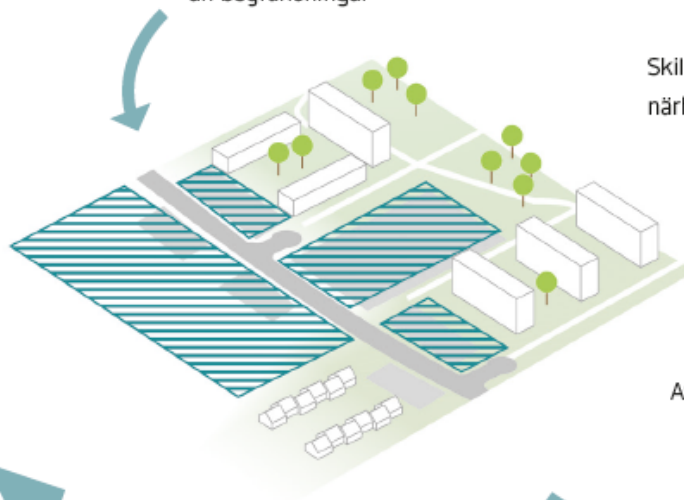
DRIVKRAFTER

BEGRÄNSNINGAR



1. DRIVKRAFTER OCH
BEGRÄNSNINGAR KARTLÄGGS

Byggbara ytor där drivkrafter är större
än begränsningar



2. BYGGBARA YTOR
IDENTIFIERAS



3. BYGGBARA VOLYMER
BERÄKNAS

Torslanda Amhult
1 100

Norra Hisingen
9 400

Östra Göteborg
9 800

Västra Hisingen
5 800

Lundby
27 900

Örgryte Härlanda
8 200

Centrum
15 800

Majorna Linné
4 400

Västra Göteborg
10 000

Askim Frölunda Högsbo
28 900

Stadsdelar

Antal bostäder

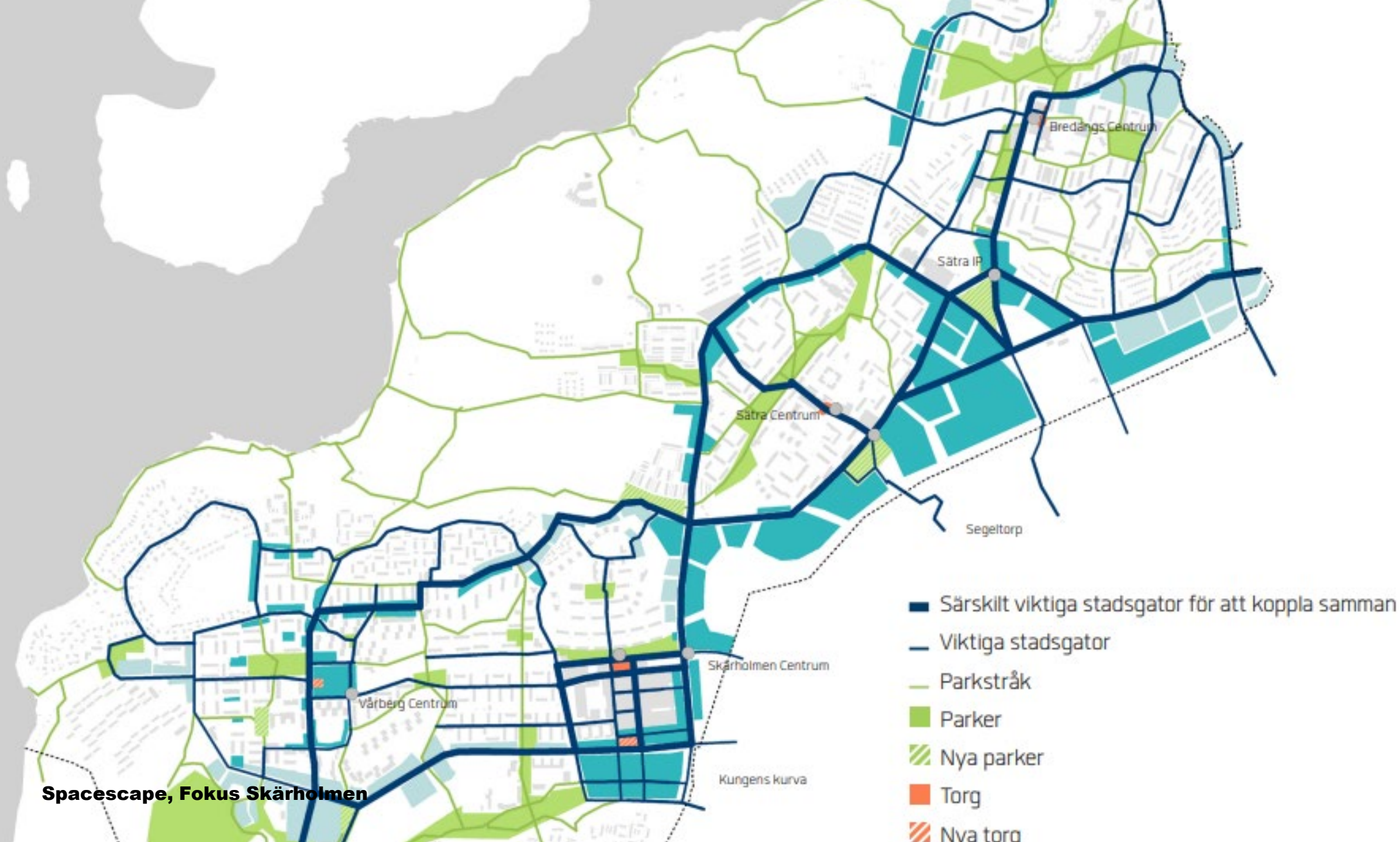
Större omvandlingsområden



1/4

av Göteborgs bostadspotential
till 2050 realiseras genom omvandling
av väg till gata







Brunnberg & Forshed, Fokus Skärholmen



White arkitekter, ombyggnad av Örbyleden

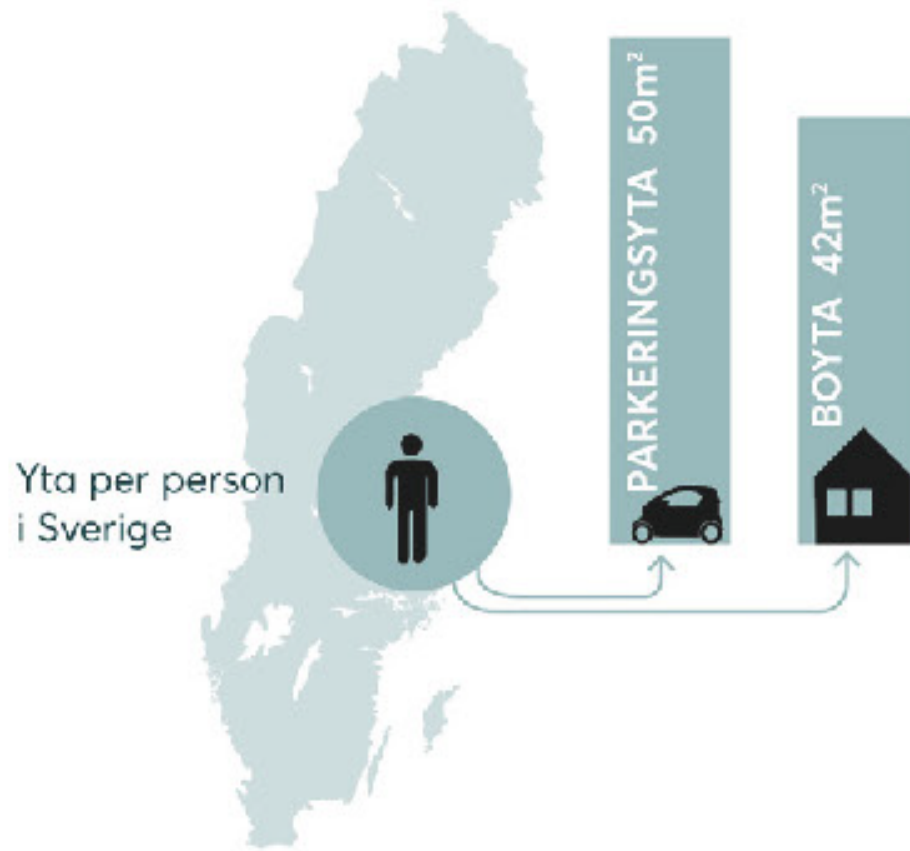


Den mångfunktionella staden



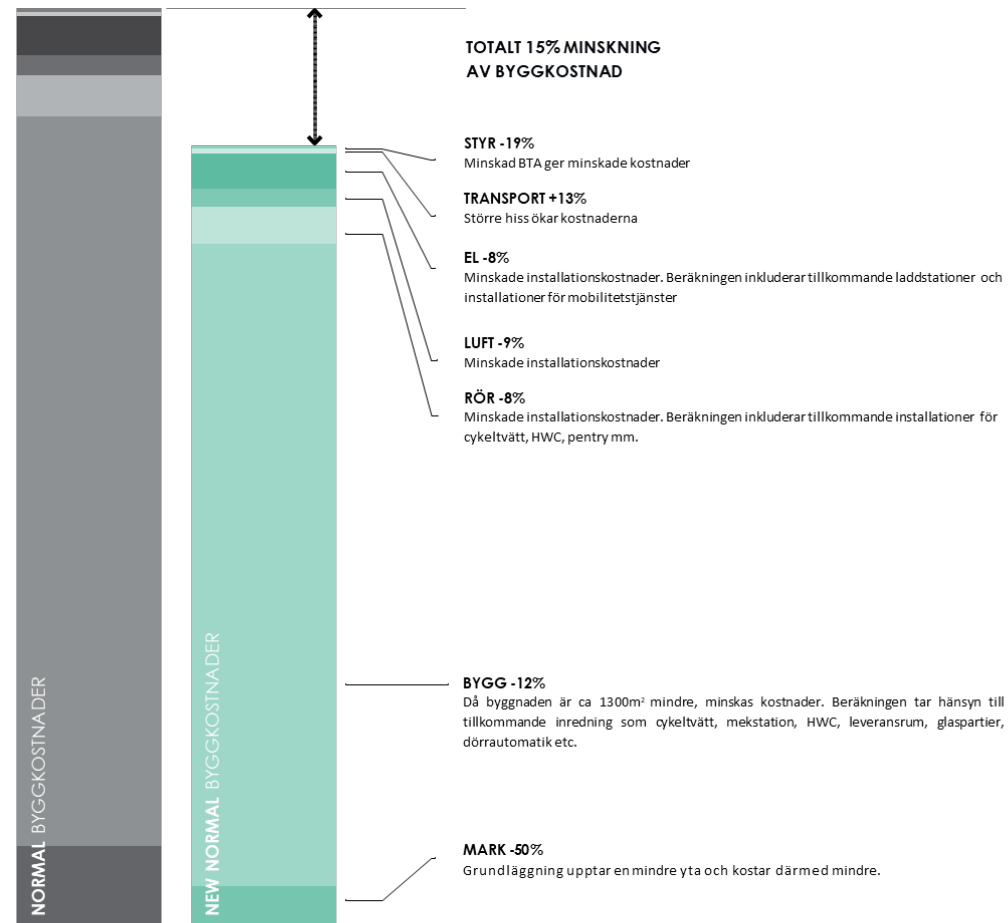


Brf Vivan, Riksbyggen



YTA PER PERSON I SVERIGE

50 kvadratmeter parkerings- respektive 42 kvadratmeter boyta.



15% minskning av byggkostnad

TIP



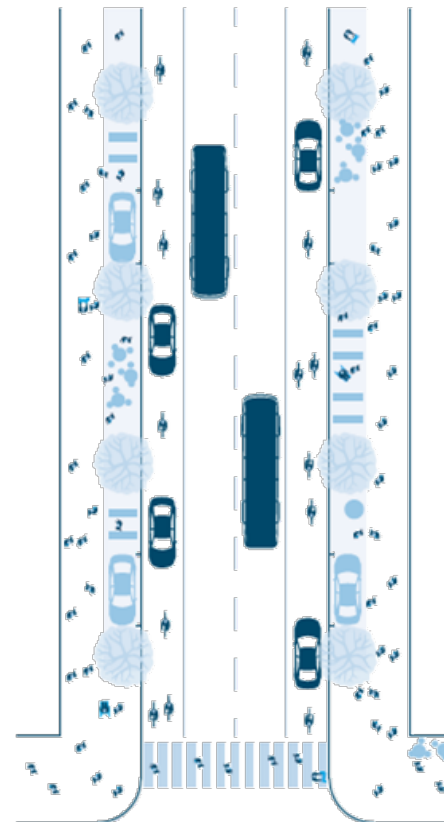
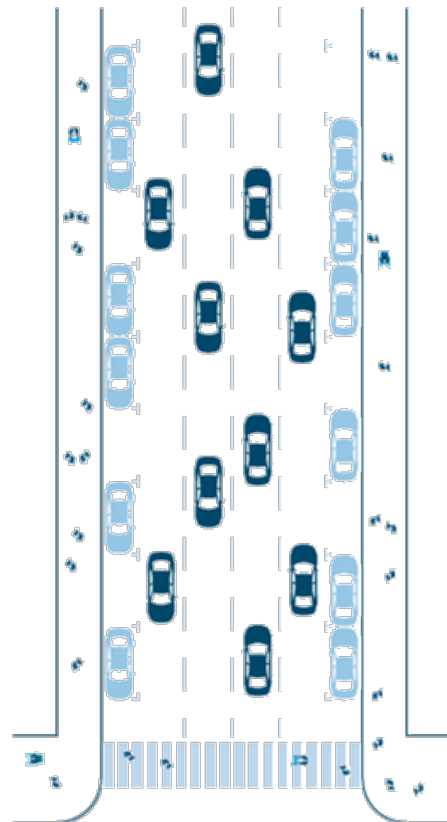
Theory into Practice, Mobo



En poolbil ersätter 7-10 bilar



Volvo On Demand



Traditionell stadsgata			Smart flerfartsgata		
Yta	Bredd	Kapacitet	Yta	Bredd	Kapacitet
Gångyta (2)	6 m	6000 pers/tim	Gångyta (2)	6 m	6000 pers/tim
Köryta (4)	13 m	3600 pers/tim	Cykel/Köryta (2)	6 m	4200 pers/tim
Parkeringsyta (2)	5 m	0 pers/tim	Kollyta (2)	7 m	4000 pers/tim
			Flexyta (2)	5 m	0 pers/tim
Summa	24 m	9600 pers/tim		24 m	14200 pers/tim



**DESIGNGUIDE
FÖR SMARTA
GATOR**

CHALMERS VU SPACESCAPE SWECO whitta

Den uppkopplade staden



Självkörande bilar: ökad trafiksäkerhet och mer yteffektiva biltransporter

LESS ACCELERATING
AND BRAKING

LESS POLLUTION



SMOOTHER TRAFFIC FLOW







Smarta energinät: Två-vägsriktade och AI-optimerade



City of
Gothenburg

Digitala tvillingar: för simulering och realtidsövervakning av stadens flöden och funktioner



M 麦迪逊广告
MADISON ADVERTISING
135 3088 5332

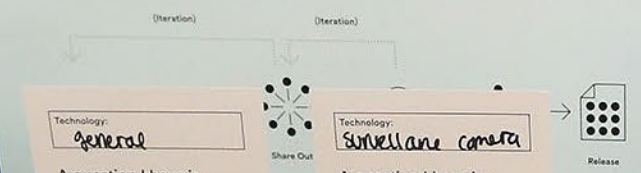
罗湖技控

Shenzhen



Quay side Toronto (Sidewalk Lab)

We asked participants to consider their questions and concerns and write them down on cards.



"It was great to bring together people with different perspectives, including government representatives and disability activists, for a day of conversation, deliberation and design."

— Cath Richardson, Research Lead, Projects by IF

Other icons became part of a series to tell a story about a type of technology.

Technology: Quality
A question I have is...
How often is this pulling information?

Technology: Water quality sensors
A question I have is...
Will I be asked if there is a problem with my water supply? By whom?

Technology: Camera
A question I have is...
Facial Data just "detected" or "recognized"?

Technology: Sound
A question I have is...
How is sound info processed? what does it learn?

Technology: Data Storage
A question I have is...
Public/private + who has access? Are the higher order insights public domain? How long is data retained?

Technology: WIFI networks
A question I have is...
How secure are they? are they monitored for suspicious activity or bad agents snooping on others?

Technology: PUBLIC WIFI
A question I have is...
(I DON'T HAVE A SMART PHONE) CAN I HAVE DIRECTIONS TO THE NEAREST WIFI ACCESS POINT?

Technology: pokemon go
A question I have is...
Is the gamification of data collection ethical / well-explained to user?

Technology: digital payment
A question I have is...
Is this saving my personal information?

Technology: all monitoring tech
A question I have is...
how do I find out who owns what is being collected?

Technology: SUBWAY PASSES
A question I have is...
CAN I SEE LIVE DATA ABOUT HOW CROWDED SUBWAY IS?

Technology: Traffic rider camera
A question I have is...
What is the default position for the camera? (Is it just for car's cameras or also monitoring?)

Technology: blue tooth beacon
A question I have is...
what other devices can see my beacon?

Technology: Subway ridership counting
A question I have is...
Can cities optimize subway capacity usage by monitoring when people travel? Like tickets with specific usage times or board passing?

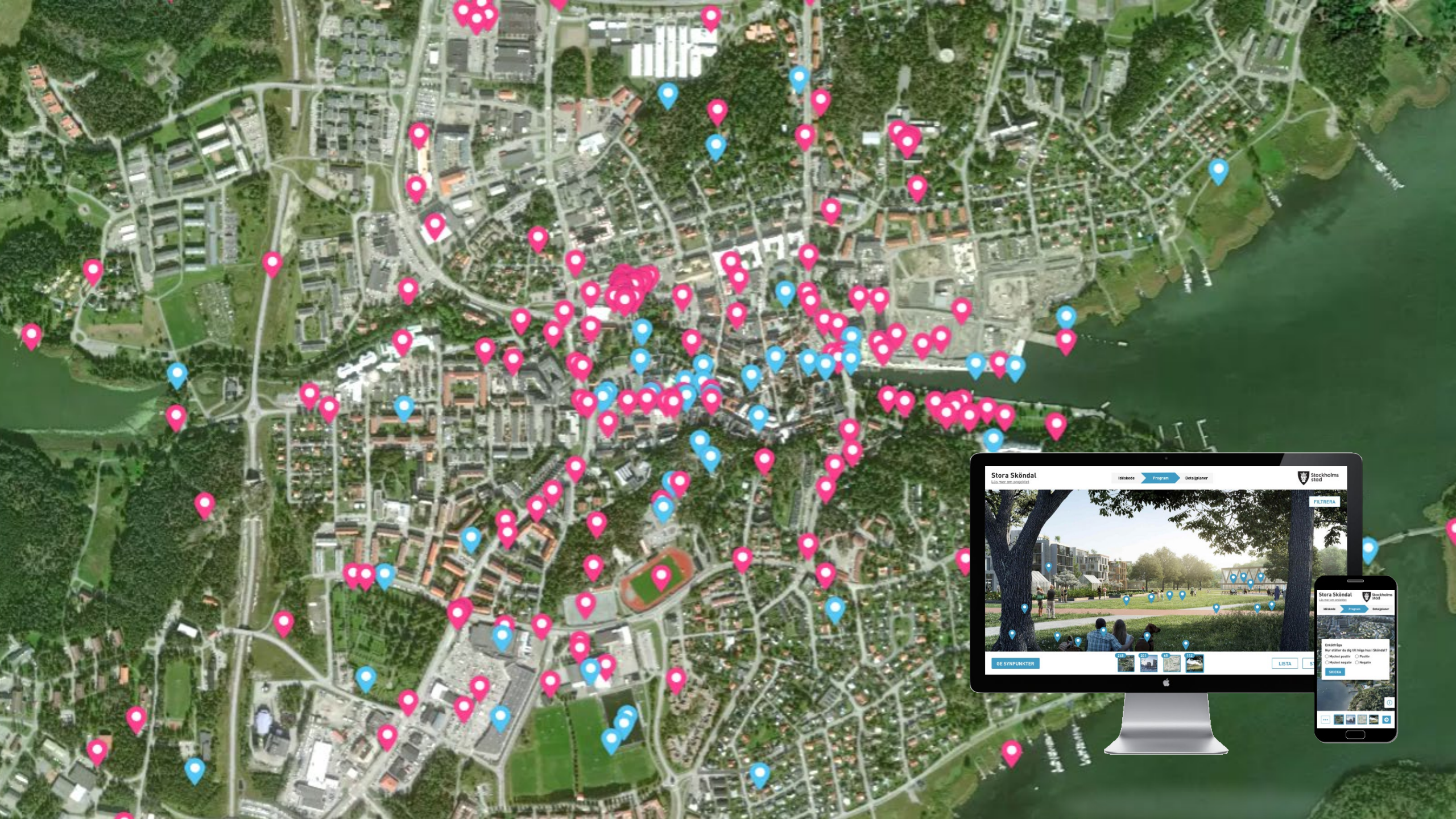
Technology: Security
A question I have is...
when something goes wrong, who communicates that?

Technology: Location My phone tracking
A question I have is...
Should I be allowed to profit from companies selling my location data? Can I choose who profits or control when data is sold?

Technology: Bluetooth data (and others)
A question I have is...
Is the data sold to 3rd parties? Is the 3rd party usage exclusive?

 placetoplan





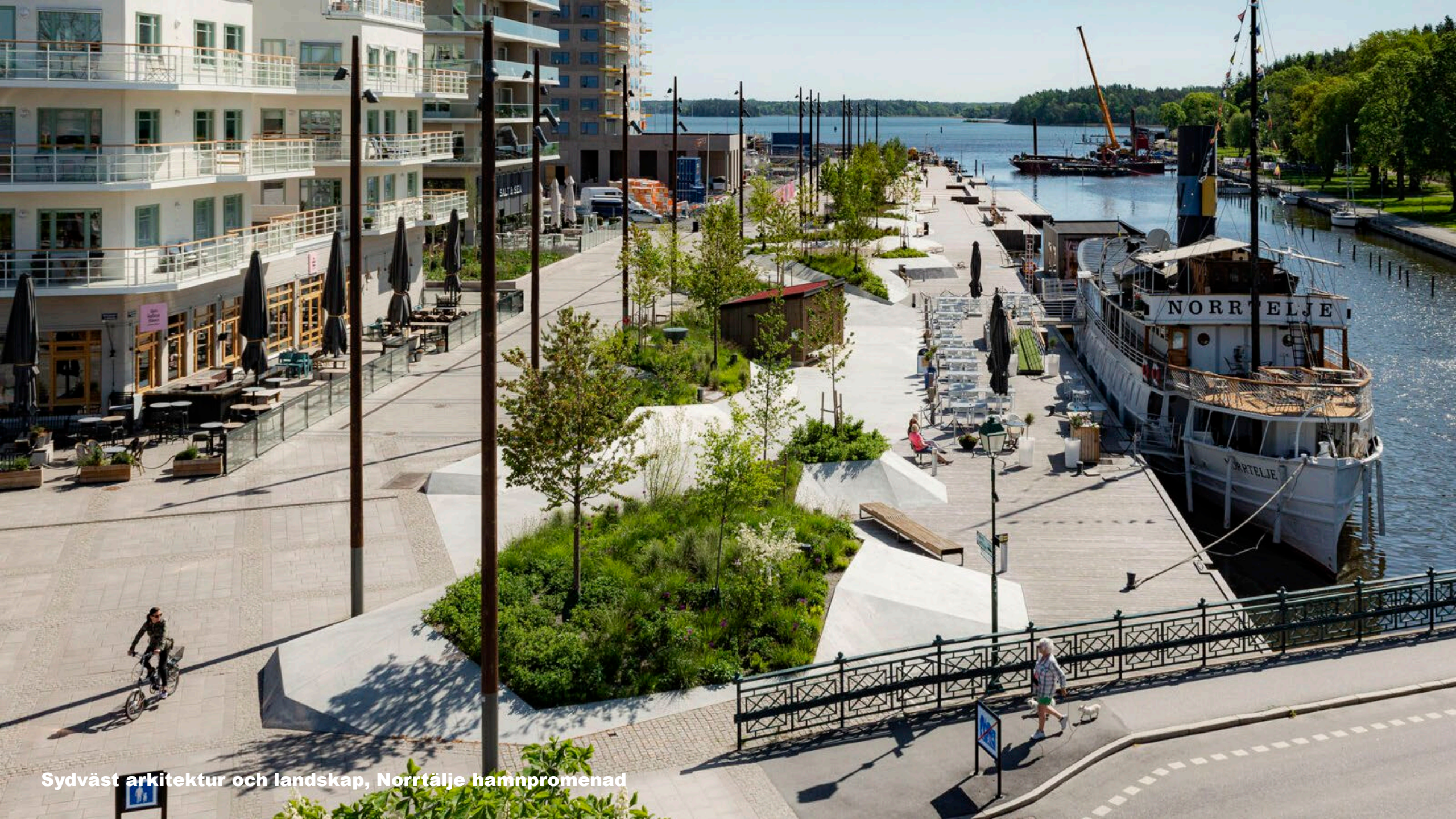


Plats för bad

Plats för båtar

Plats för barn

Spacescape, Norrtälje hamn



Sydväst arkitektur och landskap, Norrtälje hamnpromenad



How can places make you move and thrive?

All places should support healthy movement

Decreasing daily physical activity globally is increasing health related issues such as diabetes, cardiac diseases etc. Places can have a big impact on physical activity, and on your health

Spacescape, Novo Nordisk

Toolboxes for planners, placemakers and people

This platform aims to help you see and measure how places and urban design can increase daily physical activity in cities around the world

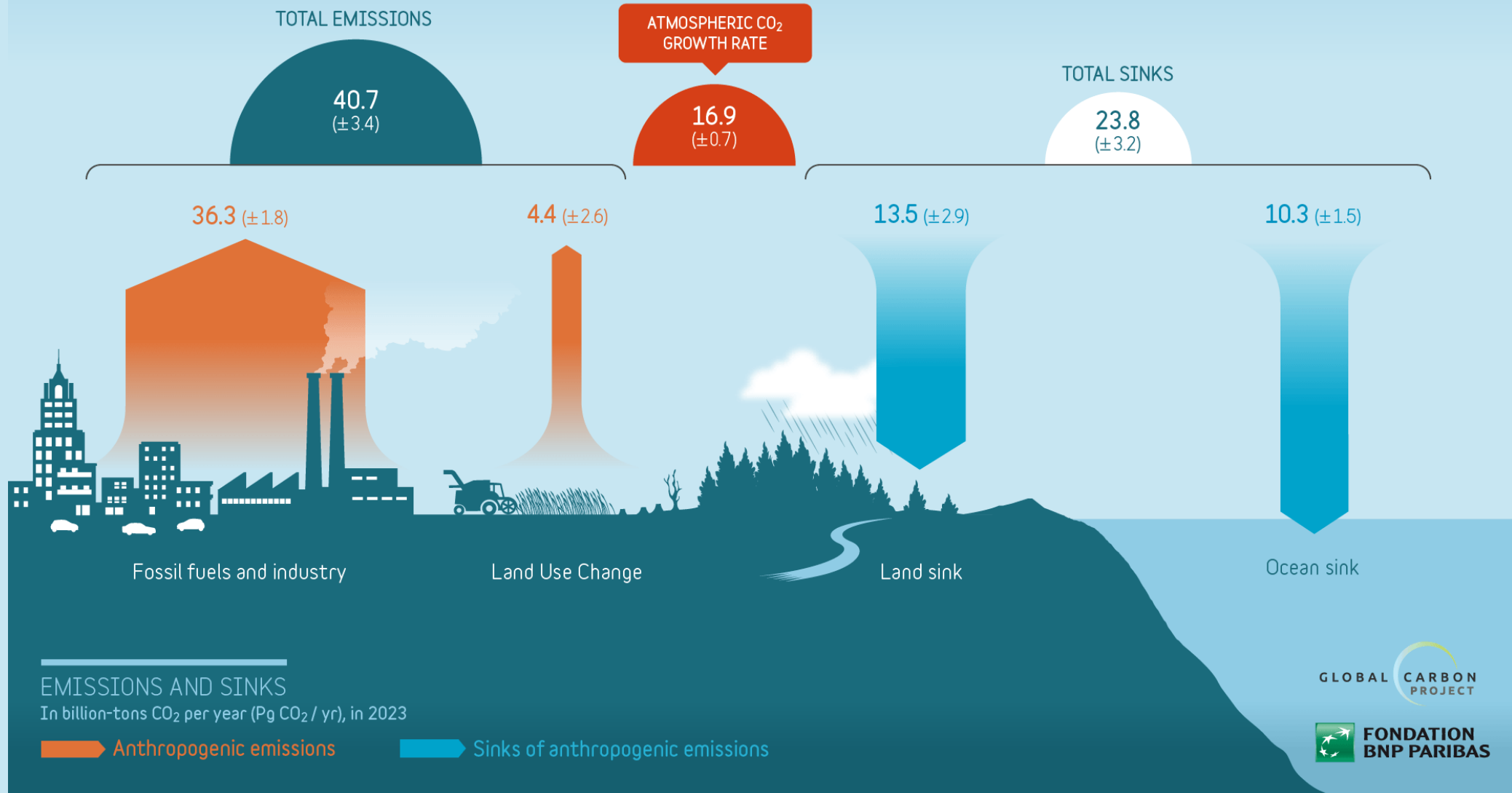
Den naturliga staden







GLOBAL CARBON BUDGET 2023





Stadsbyggandets klimatpåverkan

RÅVARUUTVINNING
OCH TILLVERKNING

ENERGIPRODUKTION

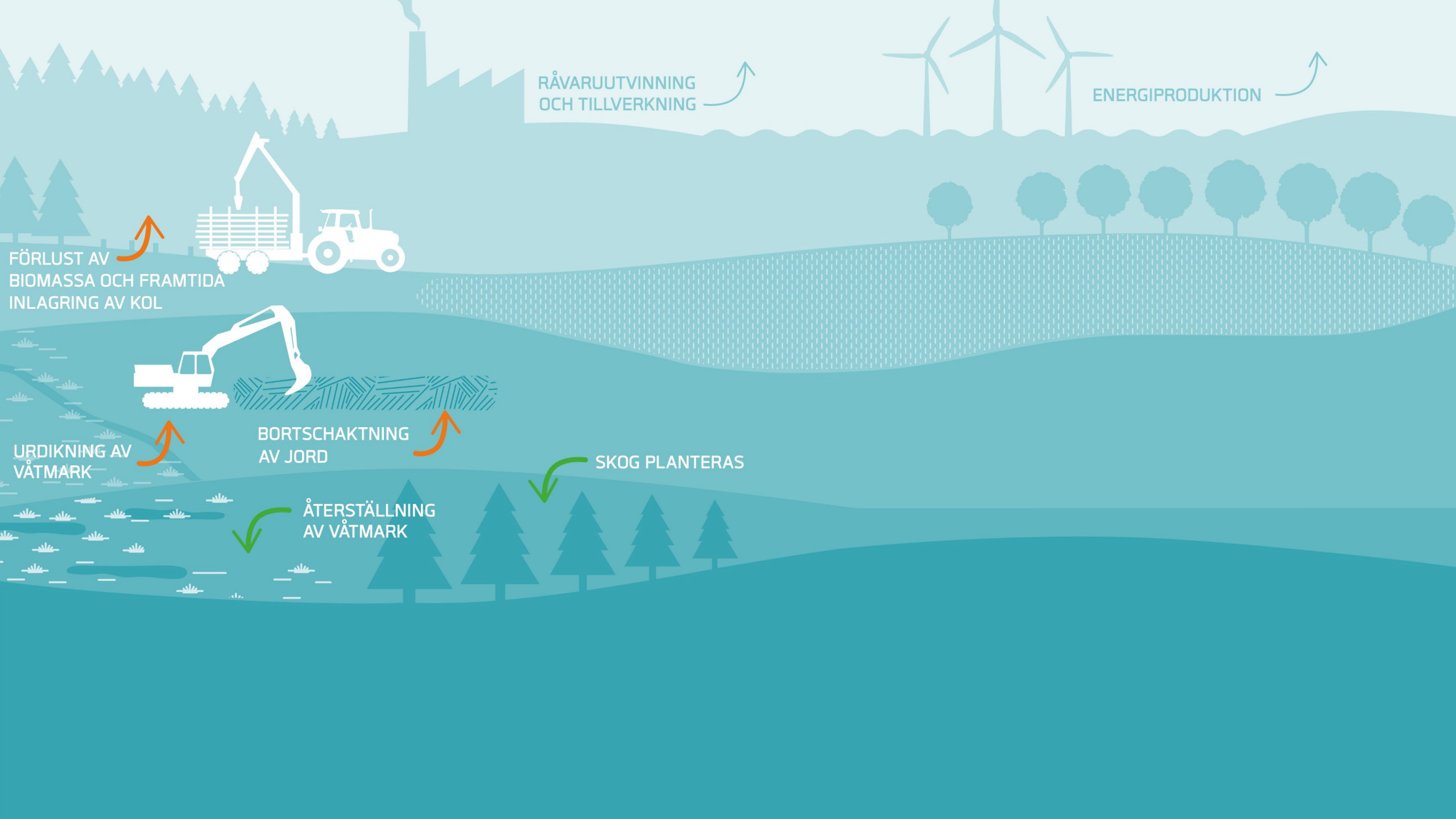
FÖRLUST AV
BIOMASSA OCH FRAMTIDA
INLAGRING AV KOL

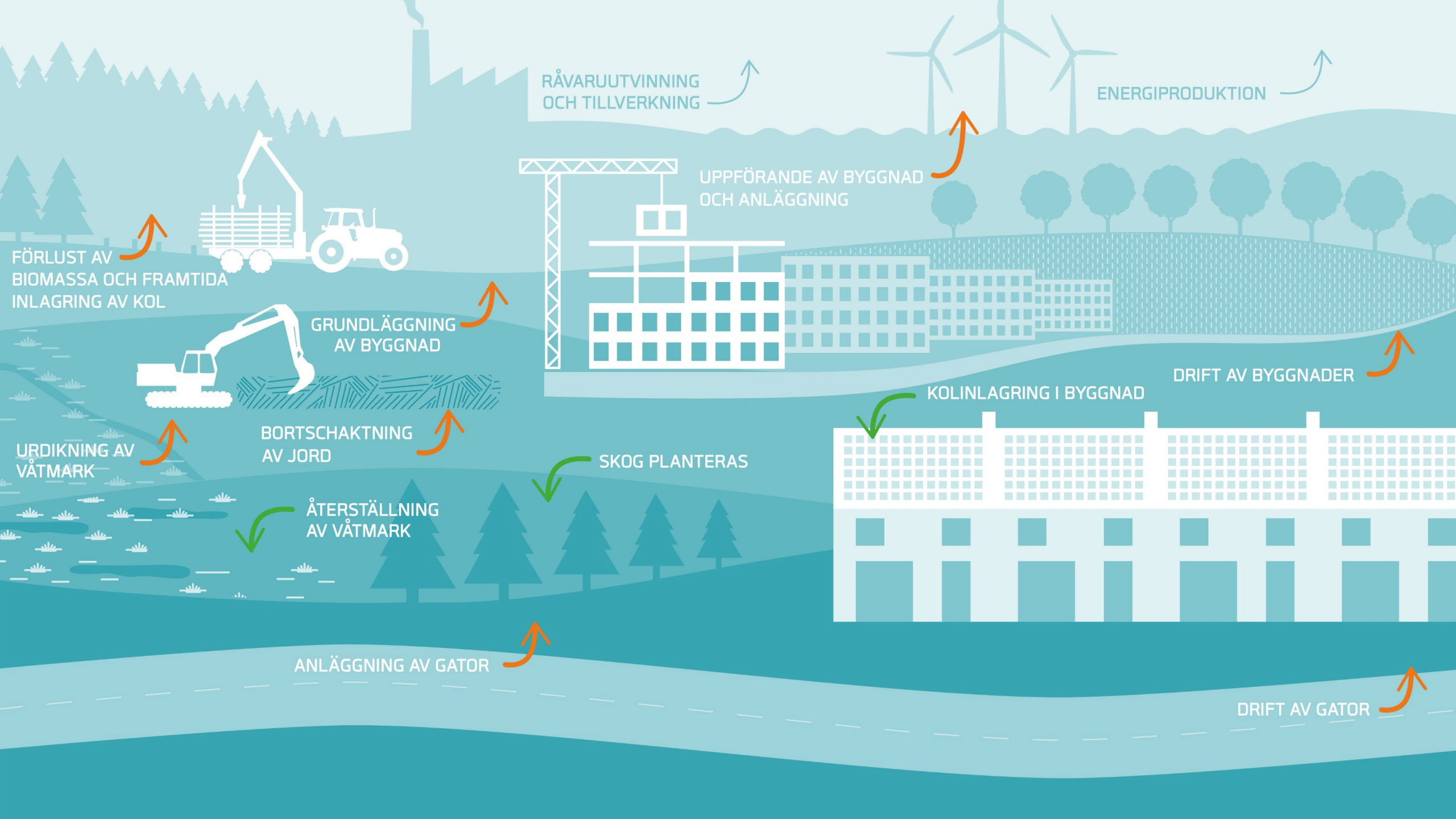
URDIKNING AV
VÅTMARK

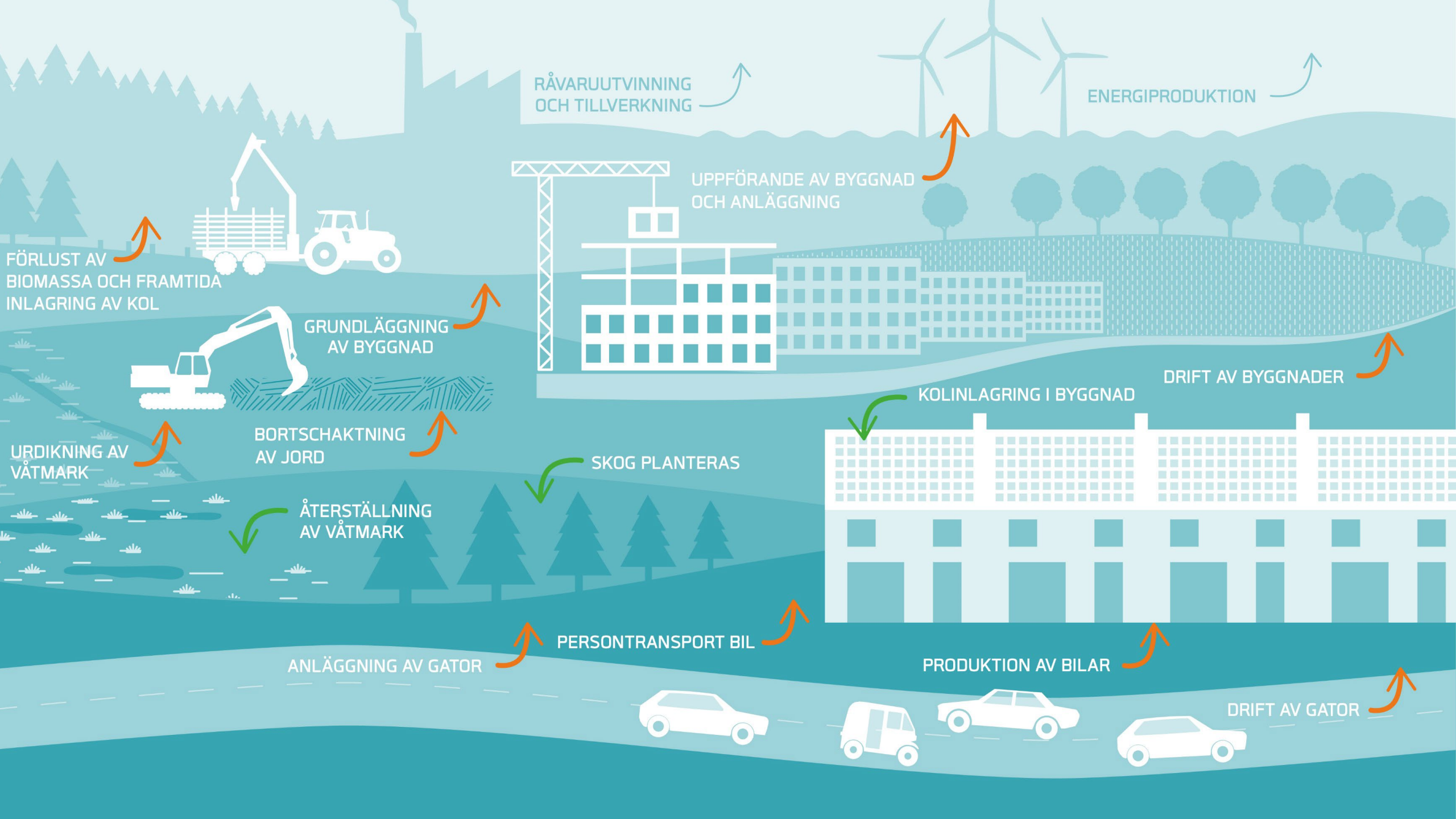
BORTSCHAKTNING
AV JORD

SKOG PLANTERAS

ÅTERSTÄLLNING
AV VÅTMARK









Föreslagna koncept är inte bara var för sig betydelsefulla. Sannolikt förstärker de också varandra.



Tack!

spacescape.se